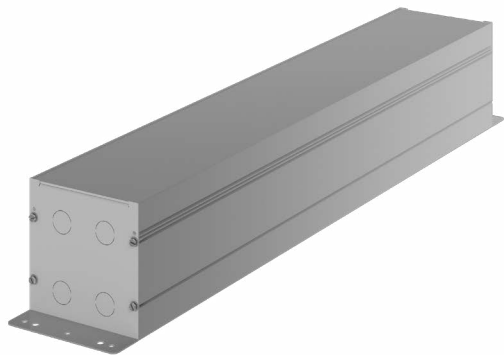


Features Silent Source™ Technology

Project _____

Type _____

Notes _____



Silent Source technology is designed to reduce electromagnetic interference (EMI) - equipment-generated 'noise' that can create undesirable artifacts in MRI scans. It does so by use of low wattage drivers, which require smaller filters and produce less noise. It also isolates all dimming and filters within specially designed remote power supply enclosures, to be located outside the MRI scanning room in the equipment room.

Power Supply Specifications

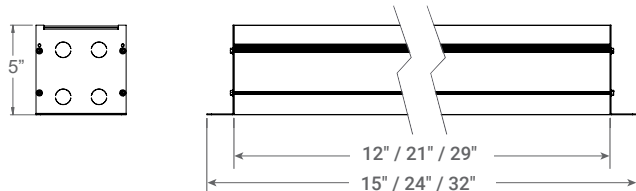
- Three sizes: 12", 21" and 29"
- Pre-installed cable from remote power supply to luminaire, 50ft fixed length with MOLEX® Quick Connect plug for easy wiring.
- Lower wattage drivers provide appropriate power consumption, energy savings and sustainability
- All-aluminum construction for effective heat dissipation.
- Cable enclosure within aluminum conduit (by others) for additional EMI shielding is optional, not required

Simplified Dimming and Operation

- Remote 0-10V dimming - all dimming happens on enclosure side, not on luminaire side. Each 0-10V circuit goes to wall dimmer switch outside MRI scanning room
- Each 24V line is EMI filtered
- Can be controlled through building management automation system

Independently tested and certified to meet MIL-Std 461-G for conducted and radiated emissions.

Testing procedures related to light fixtures, as part of the Air Force/Navy Fixed - a Department of Defense Interface Standard for EMI compliance/electromagnetic compatibility. Rated to provide high level of protection against radiated and conducted emissions outlined in RE-102 and CE-102, respectively.



Ordering Guide*



DPMRI						
PRODUCT ID	DRIVER	CIRCUIT 0-10V	EMI* FILTER	REMOTE POWER SUPPLY BOX MRI		
DPMRI	remote 24V driver with remote 0-10V dimming	# specify number of drivers	# specify number of circuits	# specify qty. of filters	+RPSMRI12(#)	12" long box*
					+RPSMRI21(#)	21" long box**
					+RPSMRI29(#)	29" long box***
				* Electromagnetic interference.	* Holds one driver+filters ** Holds two drivers+filters *** Holds three drivers+filters Specify quantity.	

*For a final ordering code example see page 2.

Please, consult factory if help with the calculation is required.

Sample Layout

Dimming Circuit 1

Luminaire Group 1 is on its own dimming circuit and consists of the Undercabinet luminaires and Sketch Curved Recessed Arcs. To calculate for the Remote Power Supply, the following information is needed:









MRI Undercabinet (2 luminaires, measuring 30"): entered as 2.5'
 MRI Sketch Curved Recessed Arcs: Quantity 6, Length 4' each

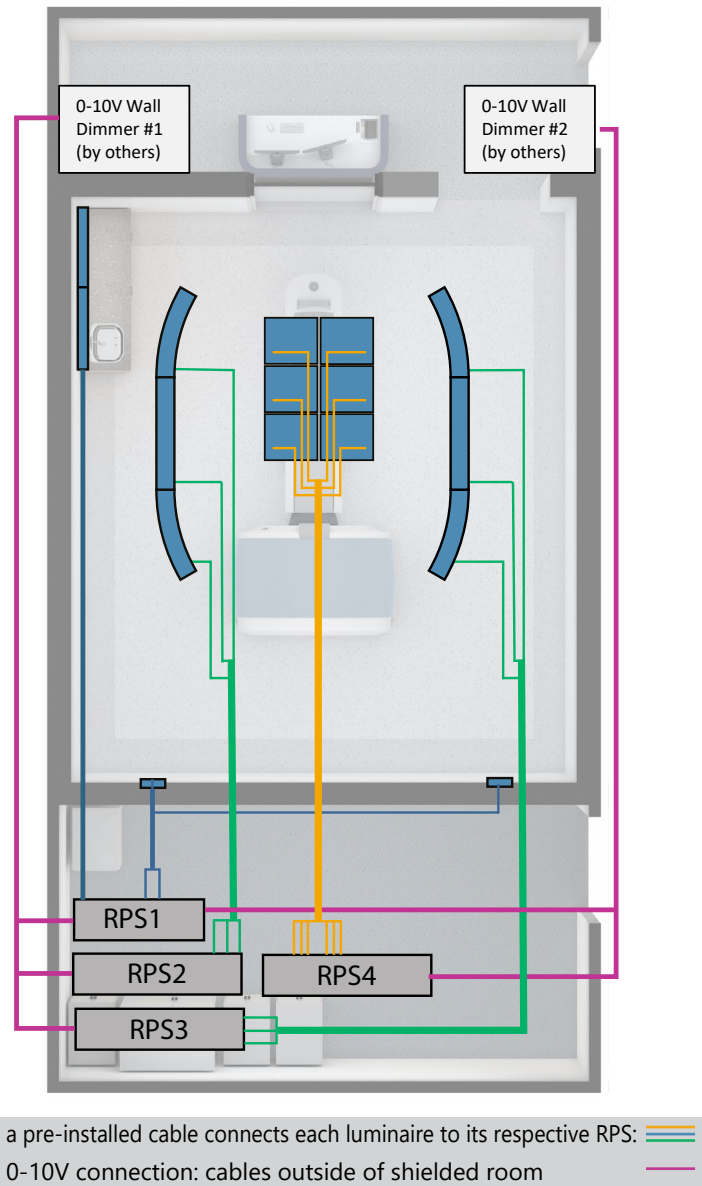
Dimming Circuit 2

Luminaire Group 2 is on its own dimming circuit and consists of the Tranquility Drop Lens configuration and the Tranquility Closed Book sconces. To calculate for the Remote Power Supply, the following information is needed:

MRI Tranquility Drop Lens: Quantity 6 (number of 2x2 luminaires)
 MRI Tranquility Closed Book Sconces: Quantity 2, Length 2' each

Luminaire Legend

IMAGE	QTY.	Description/ Product ID	Symbol	Circuit
	2	MRI Sketch 12' (BCSKMRI)		#1 (RPS2, RPS3)
	2	MRI Undercabinet 30" (BCUCMRI-30)		#1 (RPS1)
	6	MRI Tranquility Drop Lens 2x2 (BCTQDMRI-22)		#2 (RPS4)
	2	MRI Tranquility Closed Book Sconce 24" (BCSCTQMRI-24)		#2 (RPS1)



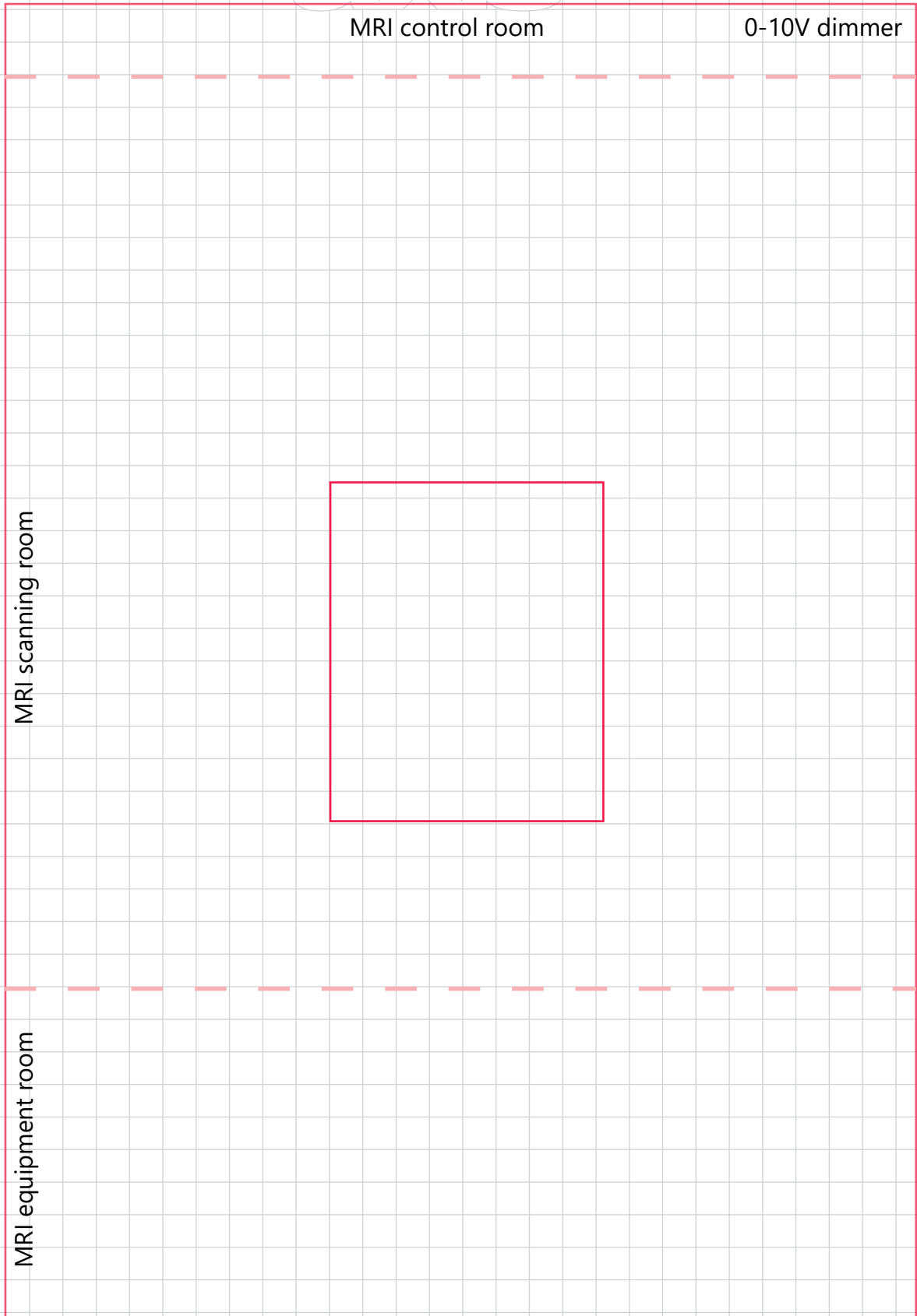
Based on the information for each luminaire and dimming circuit example, we can build a final ordering code and determine the size of the Remote Power Supply. In this sample layout, one RPSMRI21 and three RPSMRI29 enclosures are required.

Final ordering code based on the sample layout:

DPMRI-11-2-22-RPSMRI21(1) + RPSMRI29(3)

Total power: 465W
 Drivers: 11
 0-10V Circuits: 2
 Filters: 22
 RPSMRI21: 1
 RPSMRI29: 3

IMPORTANT – please provide your ceiling plan here by fixture, wattage, and control zones. See examples on p. 4-5.

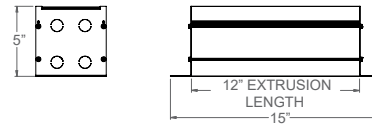


● RPS ELECTRICAL

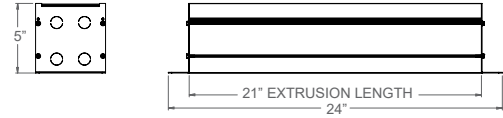
- Remote Power Supply** Exclusive remote universal input 120-277V power supply with multiple 24V filtered outputs with MOLEX® Quick Connect plug for easy wiring.
- EMI filter** EMI filter is designed to reduce electromagnetic noise in order to comply with MIL-STD-461G (RE102 and CE102) standard. Each 24V output has its own EMI filter.
- Remote dimming** Exclusive filtered remote 0-10V dimming circuits outside of the MRI scanning room
- Power cable** Pre-installed cable, 50 ft fixed length, MOLEX® Quick Connect plug. Enclosure within aluminum conduit for additional EMI shielding purposes is recommended, not required.
- Remote power supply enclosure** Power supply enclosure is all aluminum construction to help with heat dissipation, to be situated outside of the MRI room. Three sizes available: 12", 21", and 29":
- RPSMRI12 - contains one EMI filtered driver
 - RPSMRI21 - contains two EMI filtered drivers
 - RPSMRI29 - contains three EMI filtered drivers

● REMOTE BOX DIMENSIONS

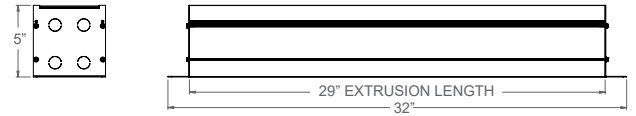
RPSMRI12 - contains one EMI filtered driver



RPSMRI21 - contains two EMI filtered drivers



RPSMRI29 - contains three EMI filtered drivers



● MRI LUMINAIRE POWER PROFILE

The table below profiles the luminaire power per product. Number of drivers per project will be optimized automatically by our RPS calculator tool - Silent Source technology simplifies the solution for you!

Product Name	Product ID	Luminaire Power
MRI Beam 2 Recessed (SO, BW)	BCB2RMRI	9 W/ft
MRI Beam 2 Recessed (WW, GZ)	BCB2RMRI	5 W/ft
MRI Beam 4 Recessed (SO, BW)	BCB4RMRI	9 W/ft
MRI Beam 4 Recessed (WW, GZ)	BCB4RMRI	5 W/ft
MRI Flexible Ambient 1x1	BCFAMRI11	24 W/unit
MRI Flexible Ambient 2x2	BCFAMRI22	43 W/unit
MRI Pixel Downlight 2x2, 1x4	BCPIXMRI	5 W/unit
MRI Pixel Downlight 1x8	BCPIXMRI	10 W/unit
MRI Sconce Box	BCSBMRI	8 W/ft
MRI Sconce Closed Book	BCSCMRI	8 W/ft
MRI Sconce Open Book	BCSOMRI	8 W/ft
MRI Sketch Recessed	BCSKMRI	12 W/ft
MRI Undercabinet	BCUCMRI	5 W/ft
MRI Tranquility Drop Lens 2x2	BCTQDMRI	20 W/unit
MRI Tranquility Overlay Lens 2x2	BCTQGMRI	20 W/unit
MRI Tranquility Overlay Lens 4x4	BCTQGMRI	80 W/unit
MRI Tranquility Regressed Lens 2x2	BCTQRMRI	20 W/unit
MRI Tranquility Regressed Lens 2x4	BCTQRMRI	40 W/unit
MRI Tranquility Sconce Box	BCSBTQMRI	8 W/ft
MRI Tranquility Sconce Closed Book	BCSCTQMRI	8 W/ft
MRI Tranquility Sconce Open Book	BCSOTQMRI	8 W/ft

● QUICK CONNECT

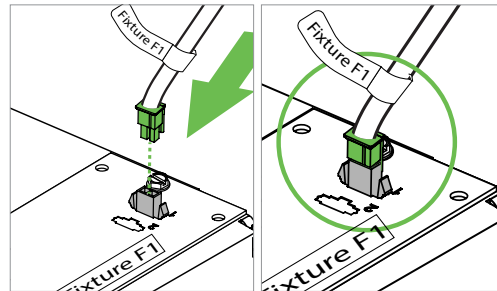
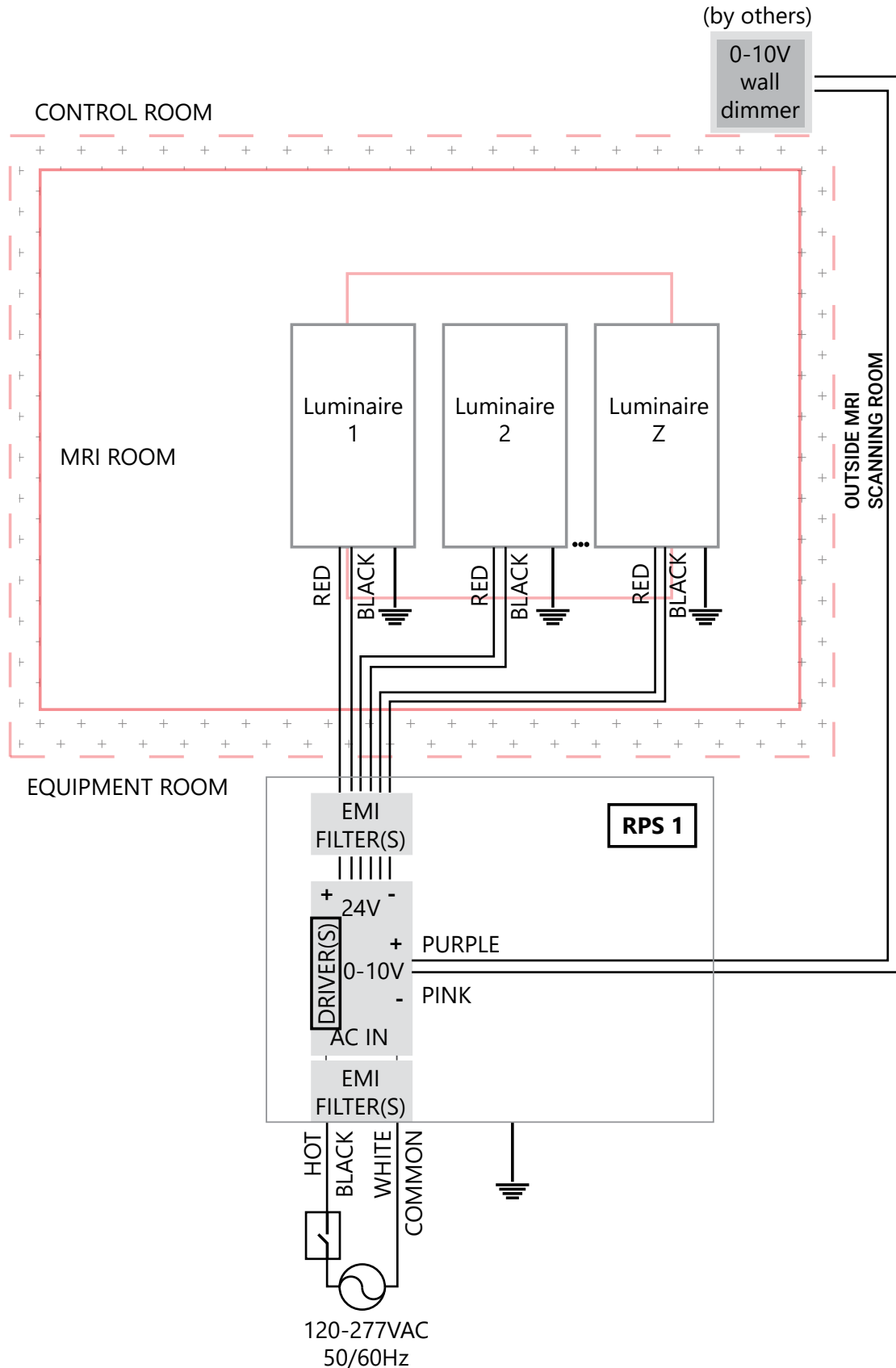


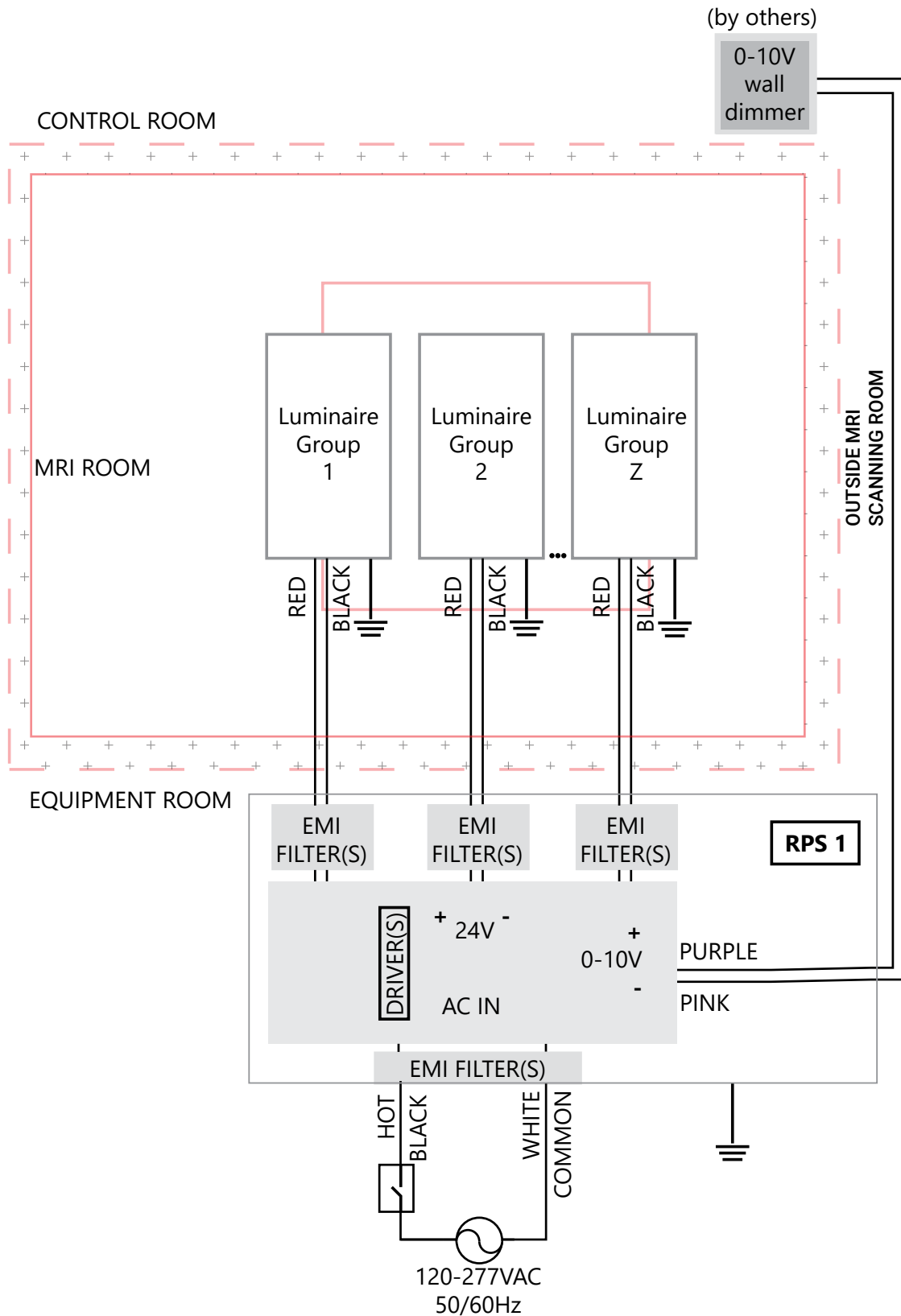
Illustration shows cables that run from RPS to luminaire using MOLEX® Quick Connect plug for easy wiring.

! Please note that luminaire type will be clearly labeled both on the cable and on the luminaire plate in order to match correct cable to its respective luminaire and circuit.

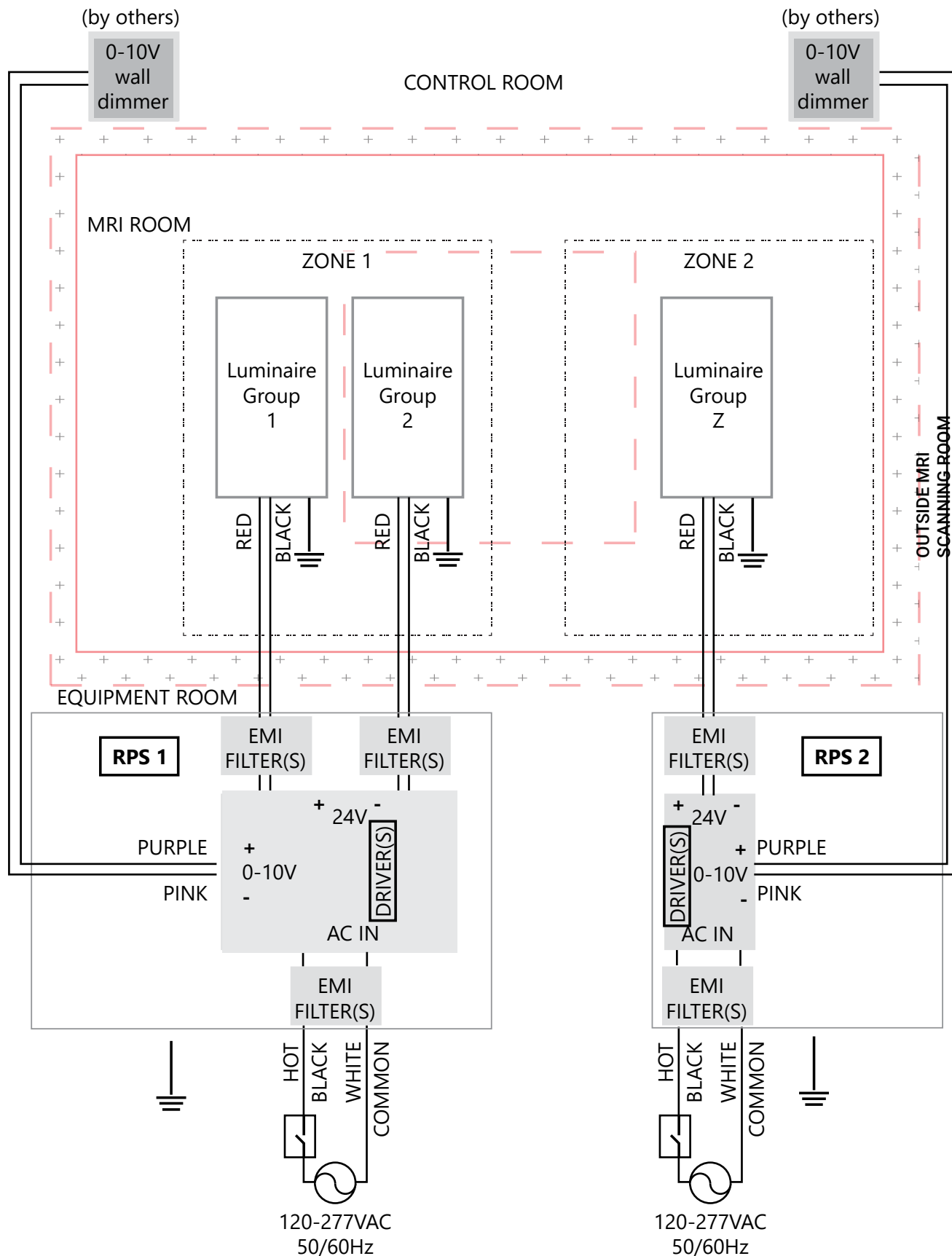
● SINGLE DRIVER WIRING DIAGRAM



● MULTIPLE DRIVERS WIRING DIAGRAM



● **MULTIPLE CIRCUIT WIRING DIAGRAM**



● IMPORTANT SAFETY MEASURES

Power must be supplied by grounded Axis Remote Power Supply to ensure adequate EMI filtering. Remote power supply system must be ordered separately, and installed according to provided instructions.

- This product must be installed in accordance with the applicable installation code by a person familiar with the construction and operation of the product and the hazards involved in an MRI environment.
- Disconnect power to all circuits before wiring fixture.
- Install in accordance with all national, state, and local codes.
- Remote power supply box **MUST** be grounded
- Failure to install unit on a mechanically-sound surface may result in personal injury, physical damage, or potential fire hazard
- Use installation procedures appropriate for an environment involving MRI and sensitive electronic equipment.
- Read all fixture markings and labels to ensure correct installation of fixture
- Supplemental instructions may be located on the fixture, in addition to the instruction sheet provided with the shop drawing, regarding orientation, or mounting restrictions.

● INSTALLATION INSTRUCTIONS

1

WHEN APPLICABLE / LE CAS ÉCHÉANT
POWER CONNECTION
CONNEXION AU RÉSEAU ÉLECTRIQUE

MOLEX® QUICK CONNECT
TO FIXTURES
MOLEX® QUICK CONNECT
POUR LES APPAREILS

INSTALL BOX ON WALL WITH SCREWS (NOT SUPPLIED)
INSTALLER LA BOÎTE SUR LE MUR AVEC DES VIS (NON FOURNIES)

2 WHEN APPLICABLE / LE CAS ÉCHÉANT

REMOVE SNAP-IN ACCESS COVER TO ACCESS BOX INTERIOR
RETIREZ LE COUVERCLE D'ACCÈS ENCLIQUETABLE POUR ACCÉDER À L'INTÉRIEUR DU BÔTTIER

3

NOTE: REMOTE DRIVERS ARE IN A SEPARATE ROOM. THE CABLE IS 50' AND IS DIRECTLY WIRED TO THE BOX; DO NOT CUT CABLE TO SIZE.
NOTE: LES PILOTES À DISTANCE SE TROUVENT DANS UNE CHAMBRE SÉPARÉE. LE CÂBLE FAIT 50' ET EST DIRECTEMENT CÂBLÉ À LA BOÎTE; NE COUPEZ PAS LE CÂBLE À LA TAILLE VOULUE.

IDENTIFICATION LABELS
ÉTIQUETTES D'IDENTIFICATION

EXTEND MOLEX® CABLES TO REACH THE ACCORDING FIXTURE AS INDICATED BY LABELS. MAKE POWER CONNECTION, **IF NECESSARY**.
PROLONGEZ LES CÂBLES MOLEX® POUR ATTEINDRE LE LUMINAIRE CORRESPONDANT, COMME INDIQUÉ PAR LES CÂBLES. EFFECTUEZ LE RACCORDEMENT ÉLECTRIQUE, **SI NÉCESSAIRE**.

*SEE NEXT PAGE FOR SPECIFIER ACKNOWLEDGMENT FORM

SPECIFIER ACKNOWLEDGMENT

Contractor acknowledges and understands the requirements of installing Axis Lighting products prior to the installation. **Please sign below before Axis Lighting releases your order.**

Signature: _____

Date: _____

Print Name: _____

Project Name: _____

Send the form to your Axis Lighting Project Manager

----- *SEE NEXT PAGE FOR MRI INSTALLATION REGISTRATION CHECKLIST

MRI INSTALLATION REGISTRATION CHECKLIST

Customer acknowledges that attached Installation Registration Checklist will be provided to the installer to sign and return to Axis Lighting after the installation is complete.

Please fill out this form and return to your Axis Lighting Project Manager.

The warranty for your MRI installation will not go into effect until receipt of this signed registration checklist.

I certify that the lighting installation for the listed MRI suite is completed per the provided installation instructions and to the best of my abilities.

Please check off to denote status:

Installation instruction sheet for Remote Power Supply is read and followed.

Remote Power supply is located outside the shielded MRI exam room and grounded.

All dimming signals wiring is located outside the shielded MRI room.

Lighting system fully tested (including dimming operation if applicable) while MRI machine is in idle mode.

Lighting system fully tested (including dimming operation, if applicable) while MRI machine is in scan operation mode with the magnets fully activated.

If any of those steps cannot be completed or you need technical assistance, please contact Axis Lighting After Sales: at aftersalesteam@axislighting.com

Electrical Contractor

Name: _____

Phone: _____

Installation date: _____

Installation site

Project Name: _____

City / State (Province) _____

Send the form to your Axis Lighting Project Manager

Axis Lighting Project Manager: _____

Date: _____