



Project

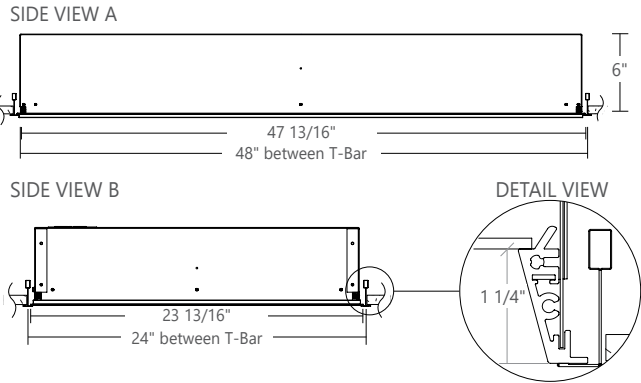
Type

Notes

TYPICAL INPUT WATTS
40 W/unit
* Based on a 2' x 4' luminaire using one remote driver

An elegantly regressed lens forming a skylight appearance

- 2x4 (also available in 2x2)
- Create a uniform look using a single luminaire, or mix and match dimensions to design unique ceiling patterns with playful graphics
- Extensive library of images to choose from
- Easy to remove lift'n'shift lens
- Non-ferrous, all aluminum
- Ceiling grid: 15/16"



Ordering Guide

BCTQRMRI		24			90		40				
PRODUCT ID		SIZE		CONFIGURATION		IMAGE *		CRI	COLOR TEMP.		
BCTQRMRI	Regressed Lens MRI Tranquility series	24	2'X4'	1	one fixture	PLEASE <a href="#">CLICK HERE TO PROCEED TO IMAGE SELECTION CATALOGUE</a> (INSERT CODE IN PLACE)		90	90 CRI	40	4000 K
				2	two fixtures						
				4	four fixtures						
				6	six fixtures						
				SC(#)	specify configuration - (#) fixtures*						
						+TQC(#)	custom image*				
						* Provide your own image (must be 150 dpi at 100% image size). For multiple images specify as TQC(01), TQC(02).....etc.					

RE	W	DC	
SHIELDING POSITION	REGRESSED FRAME FINISH	VOLTAGE	MOUNTING/SUSPENSION
RE regressed	W white	DC 24 V (CV) low voltage	TB15 t-bar 15/16" TB24 t-bar 1 1/2"*
		With remote driver Provided with 50 ft cord. DO NOT CUT. Luminaire is only compatible with components specified for Remote power supply enclosure. See the spec sheet <a href="#">here</a> .	* Consult factory - special order.

Remote power supply ordered separately. See Remote Power supply spec sheet.

## ● SPECIFICATIONS

### CONSTRUCTION

<b>Housing</b>	0.040" aluminum, nominal 18 gauge.
<b>Lens</b>	0.125" PMMA lens with Tranquility series image.
<b>Reflectors</b>	High reflectance powder coat aluminum.
<b>Luminaire support</b>	Aluminum hold-down clips

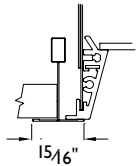
## ● FINISH

Powder coated paint.

## ● CEILING SYSTEM

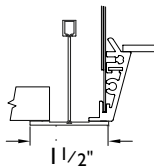
### T-BAR STYLE MOUNTING

#### (TB15)



15/16" T-BAR

#### (TB24)



1 1/2" T-BAR

**i** Installation sheets for all mounting options are available at: [www.axislighting.com](http://www.axislighting.com)

## ● WEIGHT

**2x4** 25 lbs / 11.3 kg

## ● APPROVALS

With product features that promote cleanability and durability, Axis Lighting meets functional and application-specific industry listings such as UL, and National Sanitation Foundation (NSF) standards. Independently tested and certified to meet MIL-Std 461-G for conducted and radiated emissions.

## ● LED SYSTEM

**CRI & CCT** 90 CRI & 4000K have been selected as the color options that most enhance the broad spectrum range within the Tranquility graphics series that will apply to this luminaire

**LED life** Minimum 50,000h with 85% of lumen maintenance in 25°C ambient temperature, in compliance with IES LM-80 testing measurements.

**Thermal Management** Aluminum housing acting as the heat sink to maximize life.

## ● ELECTRICAL

**DC** 24 V constant voltage driver provided with 50 ft of cord with the MOLEX® Quick connect plug. (DO NOT CUT)

Luminaire is **ONLY** compatible with components specified for remote power supply enclosure. See the spec sheet [here](#).

## ● QUICK CONNECT

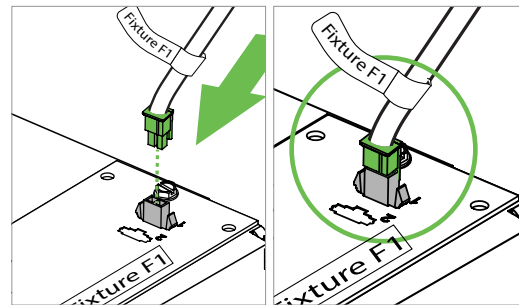


Illustration shows cables that run from RPS to luminaire using MOLEX® Quick Connect plug for easy wiring.

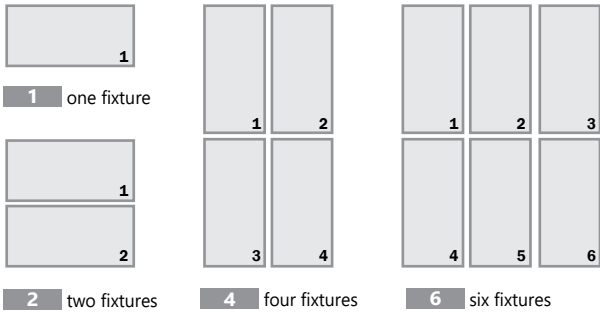
**! Please note that luminaire type will be clearly labeled both on the cable and on the luminaire plate in order to match correct cable to its respective luminaire and circuit.**



6 six fixtures configuration shown

CONFIGURATION

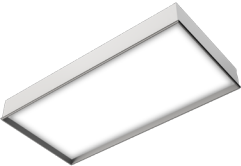
Standard configurations shown. For custom layout please provide configuration drawing, then consult factory.



EASY IMAGE SPECIFICATION STEPS

1. Select the luminaire.
2. Select image from our [portfolio](#), or provide your own image (must be 150 dpi at 100% image size).
3. Send us your layout and we will prepare a proof for your final approval.


1. Luminaire



BCTQRMRI-24

Select the luminaire.

2. Configuration




2 two fixtures

BCTQRMRI-24-2

Select your desired configuration.


3. Image



BCTQRMRI-24-2-TQ100

Select image from our [portfolio](#), or provide your own high resolution image.

4. Proof



Send us your layout and we will prepare a proof for your final approval.



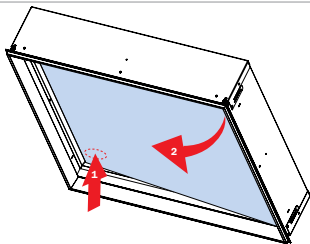
### ● IMPORTANT SAFETY MEASURES

Power must be supplied by grounded Axis Remote Power Supply to ensure adequate EMI filtering. Remote power supply system must be ordered separately, and installed according to provided instructions. Please follow link for the [RPS spec sheet](#).

- This product must be installed in accordance with the applicable installation code by a person familiar with the construction and operation of the product and the hazards involved in an MRI environment.
- Disconnect power to all circuits before wiring fixture.
- Install in accordance with all national, state, and local codes.
- Remote power supply box **MUST** be grounded
- Failure to install unit on a mechanically-sound surface may result in personal injury, physical damage, or potential fire hazard
- Use installation procedures appropriate for an environment involving MRI and sensitive electronic equipment.
- Read all fixture markings and labels to ensure correct installation of fixture
- Supplemental instructions may be located on the fixture, in addition to the instruction sheet provided with the shop drawing, regarding orientation, or mounting restrictions.

### ● INSTALLATION INSTRUCTIONS

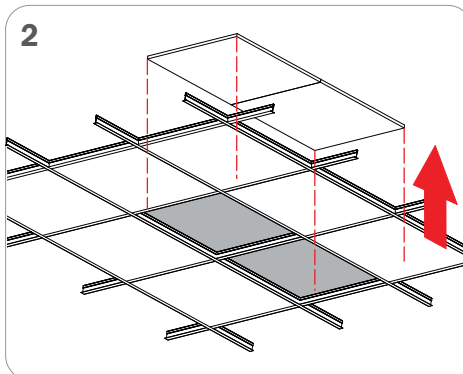
1



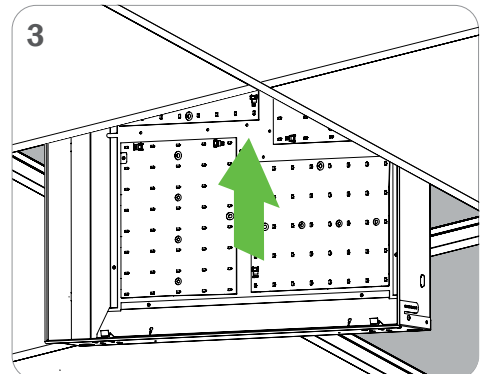
REMOVE LENS BY LIFTING UP AND SHIFTING LENS TO ONE CORNER PRIOR INSTALLATION  
ENLEVEZ LE LENTILLE EN SOULEVANT ET EN DÉPLAÇANT LA LENTILLE DANS UN COIN AVANT L'INSTALLATION

ENSURE THAT THE POWER TO THE FIXTURE'S CIRCUIT IS TURNED OFF  
ASSUREZ-VOUS QUE L'ALIMENTATION DU CIRCUIT AU LUMINAIRE EST COUPEE

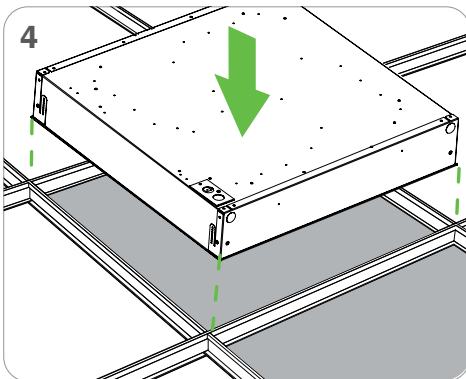
2



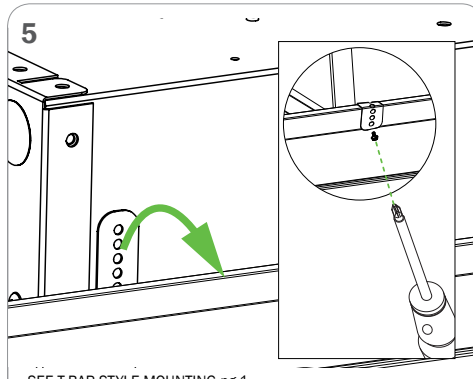
3



4

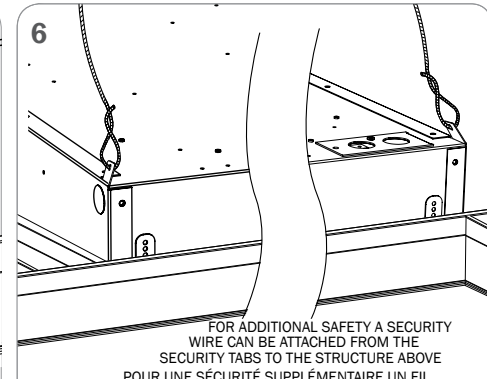


5



SEE T-BAR STYLE MOUNTING pg.1  
VOIR LE MONTAGE DE STYLE PROFILÉ EN T page 1

6



FOR ADDITIONAL SAFETY A SECURITY WIRE CAN BE ATTACHED FROM THE SECURITY TABS TO THE STRUCTURE ABOVE  
POUR UNE SÉCURITÉ SUPPLÉMENTAIRE UN FIL DE SÉCURITÉ PEUT ÊTRE RATTACHÉ À LA STRUCTURE À PARTIR DES LANGUETTES DE SÉCURITÉ

\*SEE NEXT PAGE FOR FOLLOWING STEPS

\*REST OF INSTALLATION PROCESS

7

CONTINUOUS ROW: FOLLOW STEPS 1 TO 6 TO INSTALL NEXT FIXTURE IN CEILING, THEN :

ENFILADE CONTINUE: SUIVRE LES ÉTAPES 1 À 6 POUR INSTALLER LE PROCHAIN LUMINAIRE DANS LE PLAFOND PUIS :

**NOTE:** REMOTE DRIVERS ARE IN A SEPARATE ROOM. THE CABLE IS 50' AND IS DIRECTLY WIRED TO THE BOX; **DO NOT CUT CABLE TO SIZE.**

**NOTE :** LES PILOTES À DISTANCE SE TROUVENT DANS UNE CHAMBRE SÉPARÉE. LE CÂBLE FAIT 50' ET EST DIRECTEMENT CÂBLÉ À LA BOÎTE; **NE COUPEZ PAS LE CÂBLE À LA TAILLE VOULUE.**

8

Illustration shows cables that run from RPS to luminaire using MOLEX® Quick Connect plug for easy wiring.

**! Please note that luminaire type will be clearly labeled both on the cable and on the luminaire plate in order to match correct cable to its respective luminaire and circuit.**

9

INSTALL LENS BY PUSHING LENS INTO ONE CORNER AS FAR AS POSSIBLE THEN PUSHING UP ON OPPOSITE END

INSTALLEZ LA LENTILLE EN POUSSANT LA LENTILLE DANS UN COIN AUSSI LOIN QUE POSSIBLE, PUIS EN POUSSANT SUR L'EXTREMITÉ OPPOSÉE

\*SEE NEXT PAGE FOR SPECIFIER ACKNOWLEDGMENT FORM

**SPECIFIER ACKNOWLEDGMENT**

Contractor acknowledges and understands the requirements of installing Axis Lighting products prior to the installation. **Please sign below before Axis Lighting releases your order.**

Signature:\_\_\_\_\_

Date:\_\_\_\_\_

Print Name:\_\_\_\_\_

Project Name:\_\_\_\_\_

Send the form to your Axis Lighting Project Manager

----- \*SEE NEXT PAGE FOR MRI INSTALLATION REGISTRATION CHECKLIST

**MRI INSTALLATION REGISTRATION CHECKLIST**

Customer acknowledges that attached Installation Registration Checklist will be provided to the installer to sign and return to Axis Lighting after the installation is complete.

Please fill out this form and return to your Axis Lighting Project Manager.

***The warranty for your MRI installation will not go into effect until receipt of this signed registration checklist.***

I certify that the lighting installation for the listed MRI suite is completed per the provided installation instructions and to the best of my abilities.

Please check off to denote status:

Installation instruction sheet for Remote Power Supply is read and followed.

Remote Power supply is located outside the shielded MRI exam room and grounded.

All dimming signals wiring is located outside the shielded MRI room.

Lighting system fully tested (including dimming operation if applicable) while MRI machine is in idle mode.

Lighting system fully tested (including dimming operation, if applicable) while MRI machine is in scan operation mode with the magnets fully activated.

If any of those steps cannot be completed or you need technical assistance, please contact Axis Lighting After Sales: at [aftersalesteam@axislighting.com](mailto:aftersalesteam@axislighting.com)

Electrical Contractor

Name: \_\_\_\_\_

Phone: \_\_\_\_\_

Installation date: \_\_\_\_\_

Installation site

Project Name: \_\_\_\_\_

City / State (Province) \_\_\_\_\_

Send the form to your Axis Lighting Project Manager

Axis Lighting Project Manager: \_\_\_\_\_

Date: \_\_\_\_\_